

Document type: Reference

Filtered Warnings Application (FWA) software 4.1 - installation guide

(V2.0) September 2006

Keywords

FWA, installation

Version control

This document may be made available in more than one electronic version or in print. In a case of existing or perceived difference in contents between such versions, the reference version is the version available for download from the WARP Toolbox site <http://www.warp.gov.uk>

If you find errors in the current document, please send your comment to editor@warp.gov.uk

Disclaimer

Reference to any specific commercial product, process or service by trade name, trademark manufacturer, or otherwise, does not constitute or imply its endorsement, recommendation, or favouring by NISCC. The views and opinions of authors expressed within this document shall not be used for advertising or product endorsement purposes. NISCC shall also accept no responsibility for any errors or omissions contained within this document. In particular, NISCC shall not be liable for any loss or damage whatsoever, arising from the usage of information contained in this document.

Copyright notification

The copyright and the foregoing restrictions, extend to reproduction in all media. The rights to modify and reproduce are described in the WARP Toolbox terms and conditions described on the WARP Toolbox site.

Contents

1	Scope	2
2	Requirements	2
2.1	System requirements.....	2
2.2	Required software components.....	2
3	Supported configurations	2
3.1	Single Server (one computer)	3
3.2	FWA Server with Remote SQL Server (two computers)	3
4	Pre-installation tasks	3
4.1	Windows 2003 Install	3
4.2	SQL Server 2000 Install	3
4.3	Microsoft .NET Install.....	3
4.4	SQLXML Install	4
4.5	SQL Notification Services Install	4
5	Installing FWA.....	5
5.1	Select Installation Address.....	5
5.2	FWA Email Address	6
5.3	SQL Server Settings.....	7
5.4	Web Application Options	8
6	Post-installation Tasks	9
6.1	Licensing and Initial Login.....	9
6.2	Check for updates	10

1 Scope

This Installation Guide provides advice and instructions for installing the Filtered Warnings Application (FWA) V4.1 software.

The guide includes a step-by-step installation section, which illustrates the basic installation process.

Only competent personnel, with a good working knowledge of Microsoft server operating systems, should attempt FWA installation.

The FWA requires a licence key file to complete the installation, which would normally be provided following agreement to the end user licence agreement by a registered WARP.

2 Requirements

2.1 System requirements

You must meet the following system requirements –

	Recommended
Operating Systems	Windows Server 2003 Standard Edition‡ Windows Server 2003 Enterprise Edition
Supported Databases	SQL Server 2000 Standard Edition with Service Pack 3 or later†

†Please note SQL Server 2005 is not supported at this time.

‡Please note Microsoft Small Business Server is not supported.

2.2 Required software components

You will need to download and install the following components prior to installation –

Component	Available from -
SQLXML	http://www.microsoft.com/downloads/details.aspx?FamilyID=51d4a154-8e23-47d2-a033-764259cfb53b&DisplayLang=en
SQL Notification Services 2.0 SP1	http://www.microsoft.com/downloads/details.aspx?familyid=AE73472B-5D7C-4266-94D4-7DDE7E315B98&displaylang=en

3 Supported configurations

There are two supported configurations for operating FWA.

3.1 Single Server (one computer)

In the single server configuration all FWA components, and the SQL Server database, are installed on one system. This is the simplest deployment option, but may not be suited to organisations that require more stringent data security, or that wish to use an existing SQL Server installation.

3.2 FWA Server with Remote SQL Server (two computers)

In this configuration the SQL Server database resides on a different system to the rest of the FWA application. This permits the SQL Server database to be more stringently secured than the web based FWA front-end by securing it on a separate network.

This configuration also allows the use of an existing SQL Server system, however a new dedicated database instance will be required, and additional components will have to be installed to support SQL Notification services, see section 4.

4 Pre-installation tasks

All installation tasks should be performed from a user account with Administration privileges.

4.1 Windows 2003 Install

Installation of the operating system is beyond the scope of this guide. If you are unable to complete the Windows 2003 installation please seek assistance, as you are probably not qualified to continue with this installation. The Windows 2003 IIS and SMTP services are required, and should be installed before proceeding.

4.2 SQL Server 2000 Install

Installation of SQL Server 2000 is beyond the scope of this guide. If you are unable to complete the SQL Server 2000 installation please seek assistance, as you are probably not qualified to continue with this installation.

For a single server installation, the full SQL Server 2000 product should be installed on the FWA server, if using a remote SQL Server, only the client tools are required on the FWA server.

At least SP3 should be installed in addition to the base SQL Server 2000 system, and the full-text search component available.

In order to use a remote SQL Server, SQL authentication must be enabled, and a SQL user created with the administrator role granted for use by the installation procedure.

4.3 Microsoft .NET Install

The Microsoft .NET runtime is required by the following installations, but is included as part of Windows 2003 Server, so no additional steps are required on the FWA server.

If you are using a remote SQL Server system, and this system is running Windows 2000 Server, you should obtain and install the Microsoft .NET runtime on the SQL Server before proceeding. The Microsoft .NET runtime can be downloaded here:

<http://www.microsoft.com/downloads/details.aspx?FamilyID=0856eacb-4362-4b0d-8edd-aab15c5e04f5&displaylang=en> .

4.4 SQLXML Install

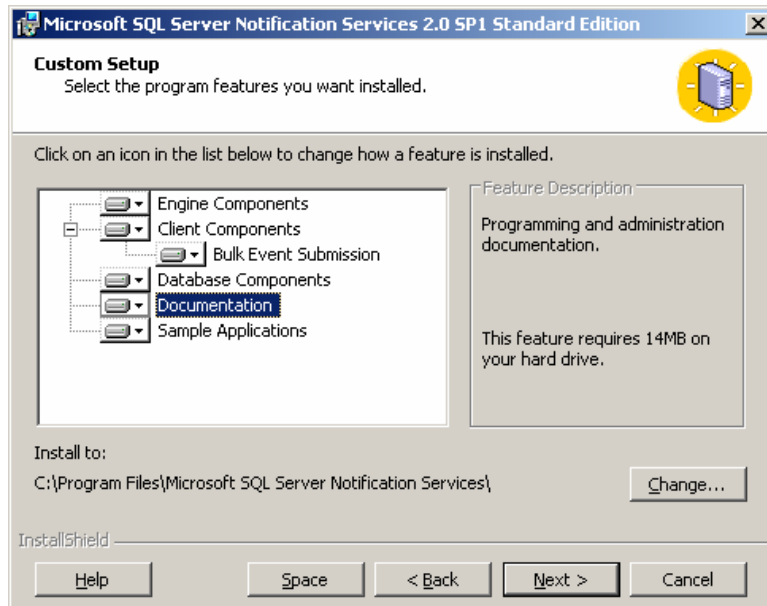
The SQLXML update can be downloaded from the Microsoft site as shown in section 2.2. It is important to install this component prior to Notification Services. SQLXML is delivered as a self-extracting executable and installs without any options, simply accept the license and select the “Install Now” button.

If you are using a remote SQL Server configuration, SQLXML must be installed on BOTH the FWA server and the SQL Server system.

4.5 SQL Notification Services Install

SQL Notification Services provides the engine that processes subscriptions and distributes notifications, and it can be downloaded from the Microsoft site as described in section 2.2. Notification services are delivered in a self-extracting executable, run the file to commence installation.

Having accepted the software license and chosen to install the software for all users, the installation options window is displayed see below:



For a single server installation, all Notifications Services options should be installed. If any options are greyed out at this stage, there has probably been a problem with the SQL Server or SQLXML installations, and you should check these before continuing.

If you are using a remote SQL Server configuration, on the FWA server you should install all options EXCEPT the Database Components, and on the SQL Server system you should install ONLY the Database Components.

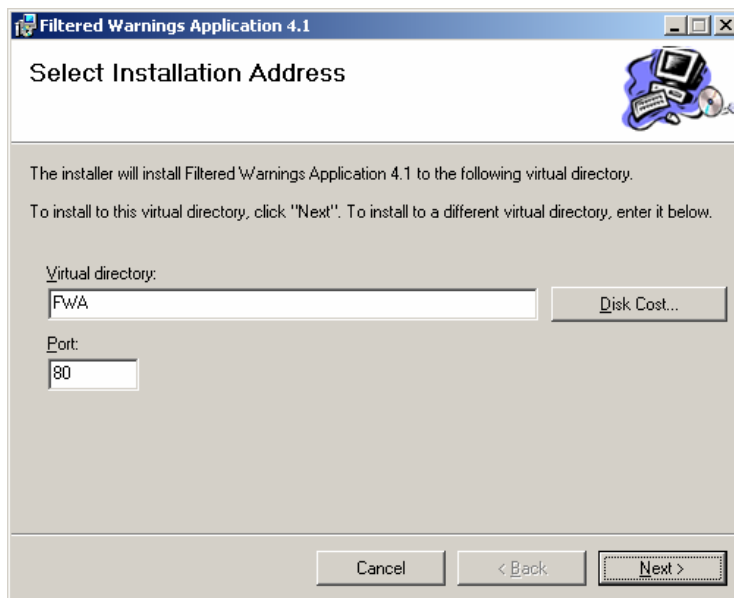
5 Installing FWA

Having completed all the pre-installation tasks detailed in section 4, the Filtered Warnings Application can now be installed. FWA is downloaded in zip format - the contents of the zip file should be extracted prior to installation. Having extracted the files, run Setup.exe to commence the installation. The installation should be run using a Windows account on the FWA server with Administrator privilege, and if performing a single server installation, the Windows account used must have the administrator role on the SQL Server system.

Accept the license, and click next at the informational window that follows.

5.1 Select Installation Address

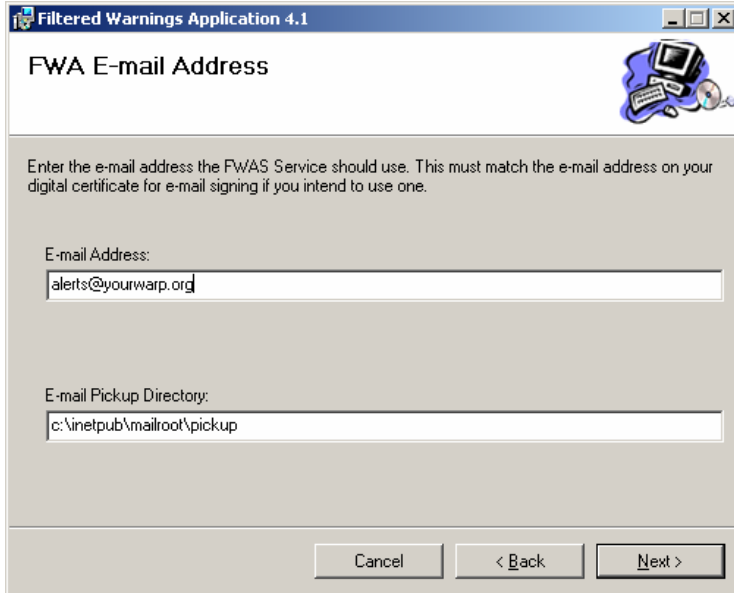
The following dialog box will be displayed:



The FWA installation will create a virtual directory below the default IIS website for the web application. By default the virtual directory is called "FWA", but you can change this if you wish. If you would like to run your FWA system on a non-standard port, change the port setting (note: you do not need to change the port setting if you wish to use SSL, as this is configured through IIS). Click "Next" to proceed.

5.2 FWA Email Address

The following dialog box will be displayed:



The screenshot shows a Windows-style dialog box titled "Filtered Warnings Application 4.1" with a sub-title "FWA E-mail Address". The dialog contains the following text and fields:

Enter the e-mail address the FWAS Service should use. This must match the e-mail address on your digital certificate for e-mail signing if you intend to use one.

E-mail Address:

E-mail Pickup Directory:

At the bottom, there are three buttons: "Cancel", "< Back", and "Next >".

You must specify an email address to be used as the sending address for all notifications. You should have considered carefully what this address should be, as it is not easy to change after installation. If you are going to use signed emails, your signing certificate will have to be issued for this address.

FWA creates emails and passes them to the SMTP service for delivery. If you have configured the SMTP service to use a non-default directory, you should amend the "Email pickup directory" field. Click "Next" to proceed.

5.3 SQL Server Settings

The following dialog will be displayed:

Filtered Warnings Application 4.1

SQL Server

Please enter SQL Server Settings below. If you are in doubt about any of these settings please refer to the installation guide. For single computer installations, the defaults shown here are usually correct.

SQL Server IP Address or Name:
localhost

SQL Username:

SQL Password:

Cancel < Back Next >

For a single server install, you need make no changes, simply click “Next “ to proceed.

If you are using a remote SQL Server, you must specify access information. In the field “Enter SQL Server IP address or name”, you can enter the address of your SQL Server, and the name of the SQL instance that you wish to use, in the form <SQL-Server-Address>\<Sql-Instance-Name>, as shown in the following example:

Filtered Warnings Application 4.1

SQL Server

Please enter SQL Server Settings below. If you are in doubt about any of these settings please refer to the installation guide. For single computer installations, the defaults shown here are usually correct.

SQL Server IP Address or Name:
192.168.12.120\FWAINST

SQL Username:
FWA_INSTALL

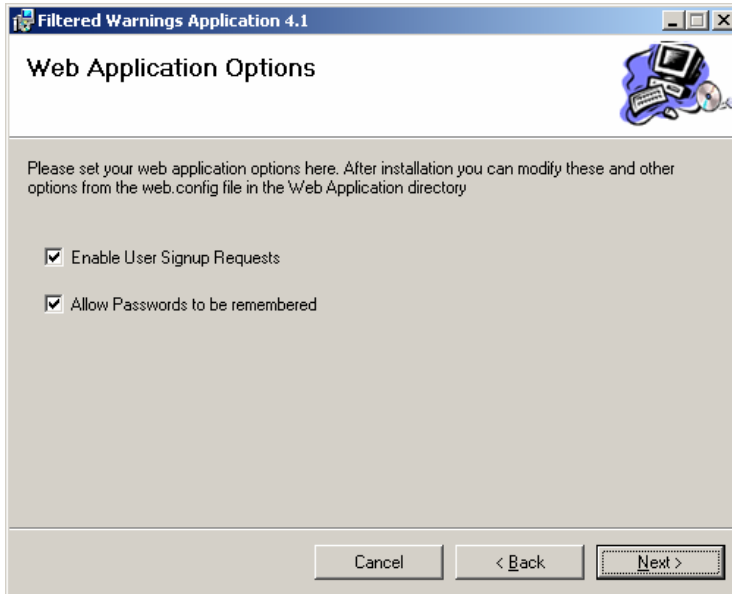
SQL Password:
Tr56RDeLoop

Cancel < Back Next >

You must also specify the SQL username and password that you created for the installation process. Click “Next” to proceed.

5.4 Web Application Options

The following dialog box is displayed:



The following table describes the purpose of the options provided:

		Default
Enable User Signup Requests	Allows Anonymous Internet Users to request an account on your FWA system by completing an application form at the Logon screen. A WARP Administrator then has to approve the application and create an account.	Checked
Allow Passwords to be remembered	Enables a tick box on the logon screen allowing users to chose to have the system remember who they are – allowing them to logon without entering a username and password each time they logon.	Checked

Click “Next” to proceed, the second options dialog is displayed:

The following table describes the purpose of the fields provided:

Field	Purpose
Technical Support and Automatic Error Reporting E-mail Address	The e-mail address that you provide will receive any mails sent by FWA users when clicking on “Technical Support” links, and any error information generated by FWA during operation.
WARP Home Page Message	This text will appear near the top of the FWA home page.
WARP Description	This text will be in the banner of every page.

Click “Next” to commence the installation.

6 Post-installation Tasks

6.1 Licensing and Initial Login

After completing the installation a browser window will open and you will be asked to provide a License XML file for your installation (this should have been provided with the installation, please contact the FWA licence provider if you do not have one).

Once you have uploaded your license file you may continue to login using “Administrator” and a blank password. You will be prompted to change your password, please set an appropriate password to protect access to the system.

6.2 Check for updates

Please check the FWA download site and install any recommended updates after your installation completes. The FWA download site can be found at <http://www.aviusexperience.com/fwa/index.php> .